

RFC

Leading Talent

MARKET UPDATE

GREEN ECONOMY Q3 2024

Full steam ahead...

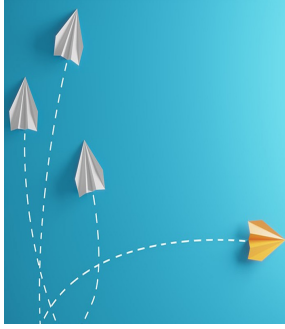
The third quarter of 2024 has seen significant advancements and activities within Ireland's green economy. This period is characterized by economic stability, focused climate policies, and robust employment trends in the green sector.



[Read More](#)

Market Sentiment Survey H2 2024.

A more detailed analysis of market sentiment will be available in the coming weeks. Please look out for our email and complete the survey,



it'll only take two minutes, we know because we've timed it!



The cost of employee turnover.

Employee turnover is a fact of life. It is however, a costly fact of life. An article by Suzanne Lucas in Inc. has estimated that it can cost up to 150% of salary to replace an employee that has left.

[Read more](#)

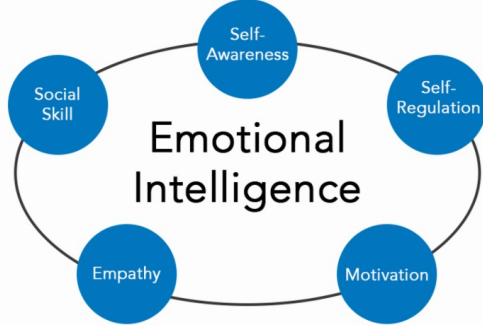


15 Retention factors

In one of our surveys we asked leaders what are the main factors that makes a job attractive. The results showed 15 in total with a top 3.

[Read more](#)

EQ- The key trait of a leader



What separates great leaders from average ones? According to Daniel Goleman they answer does not lie in technical skills or IQ, it is in fact emotional intelligence (EQ).

[Read more](#)

[About Us](#)

[Strategy](#)

[Assessment](#)

[Coaching](#)

[Search](#)



Email: leaders@rfc.ie
Tel: 01- 872 7008

RFC Leading Talent | 406 The Capel Building St. Mary's Abbey | Dublin, DUBLIN 7 IE

[Unsubscribe](#) | [Update Profile](#) | [Constant Contact Data Notice](#)



Try email marketing for free today!